



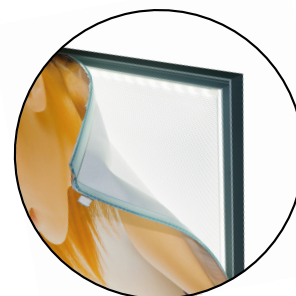
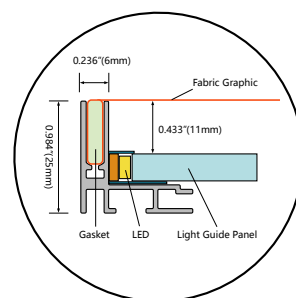
# Fabric Light Box



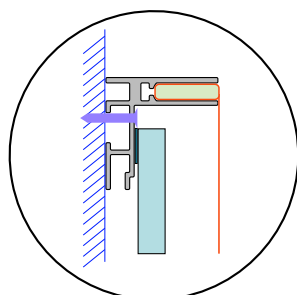
## 25mm Type (LGP Back lit Type)

Available Any Custom Size up to 2500mm X 1500mm

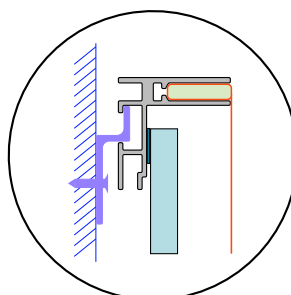
Available color temperature from 2700 °K ~ 9000 °K at every 500 °K



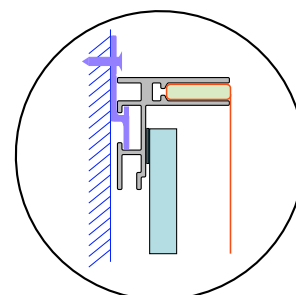
25mm T



Mounting with screws



Mounting with Z-clips



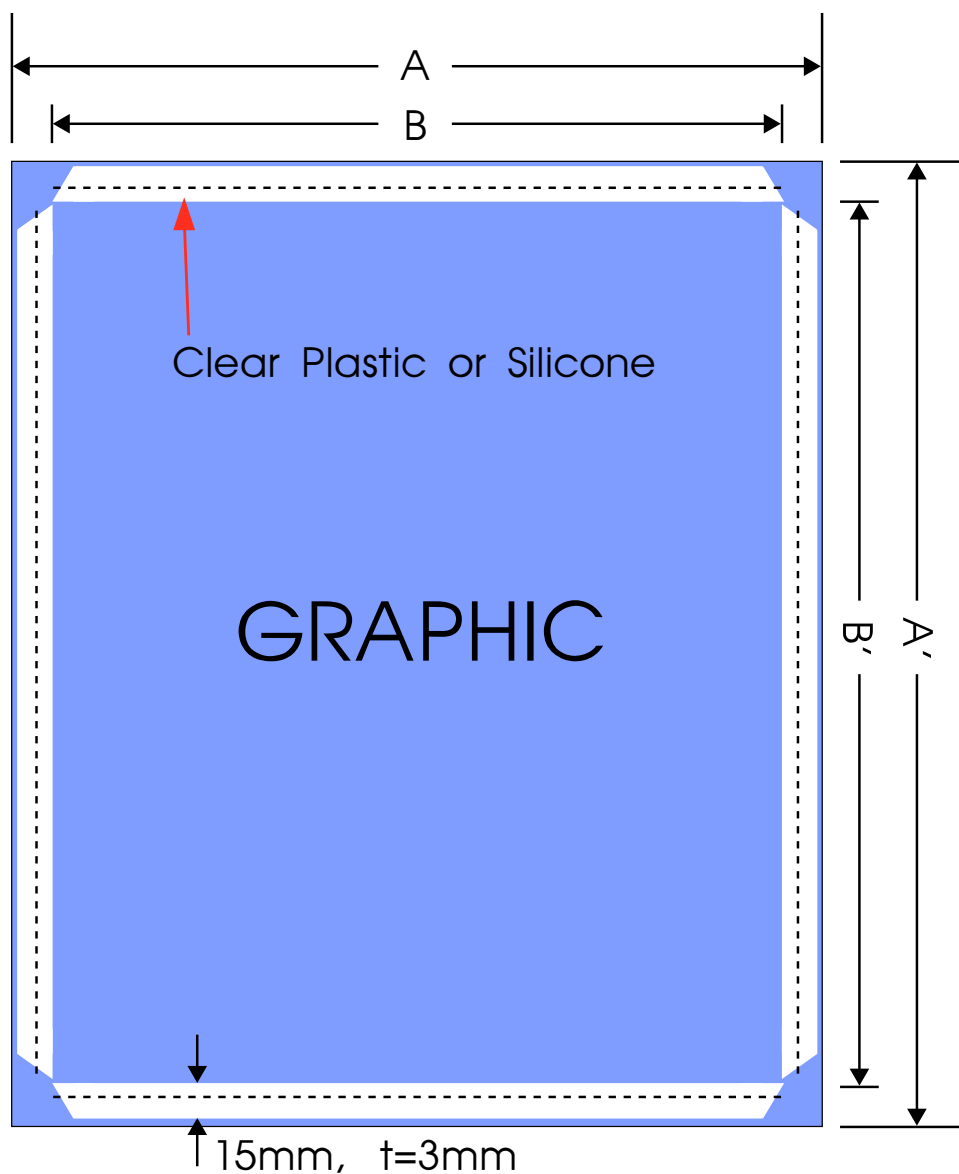
Mounting with clips

## Specification

Input Voltage	12 VDC or 24 VDC
Color Temperature	2700K, 3200K, 3700K, 4200K, 4700K, 5300K, 6500K, 7000K, 9000K
Mounting	Mounting with screws, Z-clips or mounting clips
Environment	Dry and Damp Locations
Minimum Size	12"W x 12"L x 0.984"D (300mm x 300mm x 25mm)
Maximum Size	98"W x 59"L x 0.984"D (2500mm x 1500mm x 25mm)

# Ordering Guide of Graphic for FEELIS Fabric Light Box

When you place order for the fabric prints, please refer to the following instruction.



Determine the dimension of prints as per frame overall size.

$A, A' = \text{Frame Overall Size} + 23\text{mm}$

$B, B' = \text{Frame Overall Size} - 7\text{mm}$